

**Worship Department**  
*Dream Team Handbook*

**TABLE OF CONTENTS**

Welcome .....3

Onboarding Process .....4

Organizational Chart .....5

Our Cultural Values .....6

Expectations .....8

Processes, Systems, and Resources .....9

**WELCOME:**

Welcome to the Worship Department! We are so glad to have you on the team. It is the honor of our life to serve God, and our church with YOU. Together, we will point our church to Jesus and see him glorified above everything else.

## ONBOARDING PROCESS: DREAM TEAM

1. **Audition** – The beginning of your process is to pass an audition. Fill out the Worship Application at [lifepoint.org/worship](http://lifepoint.org/worship). Follow the step-by-step instructions to schedule your audition. Once this is completed, the team will reach out to you via email with all your practice resources. The practice resources and documents will show you exactly what is expected of you when you show up for your audition.
2. **Infuse** – Once you pass your audition you will be officially in Infuse. Infuse is designed to help you understand Lifepoint worship culture, what we believe, how we prepare, and what is expected of you. Essentially, we are preparing you for your first serve. Infuse will happen at the campus you desire to serve at with the Worship Leader and Team from that location. Once you have hit all the benchmarks (benchmarks are baseline expectations that will be required of you to successfully execute a weekend from your position), you will then officially graduate onto the team. Infuse is weekly on Thursday night.
3. **Team Member** – Team members serve on Sunday Morning, Special Events, or anything else that requires worship for Lifepoint Church. Your worship leader will talk to you about your availability & frequency of serving. We always like to start with twice a month, though that is not a requirement. Team members are also required to be at rehearsal the Thursday before you serve.

**\*Growth Track:** Growth track is a requirement to serve on the worship team, but not in any specific order. Regardless of where you are in your process, work with your Campus Worship Leader to attend at your earliest convenience.

## ORGANIZATIONAL CHART

The Worship Department is made up of Campus Worship Leaders who come together in a collaborative way to help create weekend worship experiences that both churched and unchurched people love to attend.

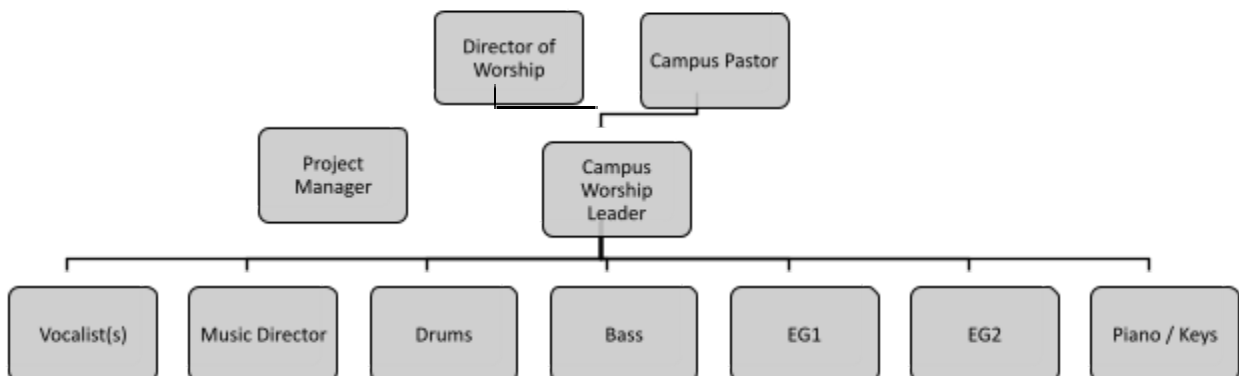
**Director of Worship:** Our Director of Worship is ultimately responsible for oversight of all teams listed below as well as establishing priorities and methods for the organization at large. He or she works in collaboration with departments and campuses to create a healthy worship culture that points people to Jesus always

### **Project Manager:**

Our Project Manager oversees incoming requests, project timelines, cross campus scheduling, and inter-departmental communication on behalf of the Worship Dept.

### **Campus Worship Leader:**

Campus Worship Leaders are responsible for the campus worship team. They are involved in everything including scheduling, communication, team health/care, and infuse.



## **OUR CULTURAL VALUES**

Our culture, our leadership, and our DNA is shaped by Jesus Himself. We look at how He invested His life, how He treated people, and how He approached His ministry. There is no better example for us to follow. Four values define our culture:

### **Love God**

- Develop your closeness with God.
- Develop your character.
- Develop your calling.

We are worshipers first: We cannot lead anyone to a place we haven't been ourselves. Our personal worship is the foundation on how we lead. We're not building our thing; we are building His Church: It can be easy being on a platform to think it's about us. Our goal is to always point people to Jesus first and point back to the vision of the house. As a Leader you hold weight as an example of closeness with the Holy Spirit, honoring God as your closest companion. You are responsible for seeking ways of development through time with Him and growth opportunities. One great opportunity is Lifepoint College, learning and growing deeper in the Word, your faith and your knowledge. Developing and using your Spiritual Gifts is integral as part of the team.

### **Love People**

- See people as they could be.
- Say what you see in them.
- Start a process to develop them.

Team First: We fight for relationship & unity: Where there is unity the Lord commands a blessing. (Psalms 133) As a Leader you are in position to consistently develop those on your team. Each person on your team should feel known and needed. When you recognize giftings within a team member, call them out, encourage them and assist your team with taking their next steps. Each person on your team, including yourself, should be taking next steps to develop. We are the resource for knowing and encouraging everyone we see to take a next step.

### **Pursue Excellence**

- Do all things well.
- Do it before you're asked.
- Do more than is expected.

Preparation Brings Freedom: We come prepared, and overprepared. The more prepared we are walking into a worship set, the more freedom we have to lead people. We Are Always Learning: Our posture is to never “arrive”. We can always get better and learn from others. As a Leader you set the tone, you set the bar. Leaders go first and leaders eat last. As a Worship Leader we see people. We have an eye for the unseen. Excellence is in you because it is in the heart of our God.

**Be Life-Giving**

- Be a servant.
- Be positive.
- Be enjoyable.

We have a joyful spirit: Serving is an honor, and we have fun doing it. We are Relational: We do life together, and work on building life giving relationships.

## **EXPECTATIONS**

**Worship Team Member** – A person who has discovered their purpose and is making a difference on the Dream Team.

- Your leader will help to determine the best serving rotation for your unique role and availability. We always suggest starting with twice a month.
- Regularly communicates with his or her Team Leader regarding prayer requests, personal development, and serving availability.

### Team Specific Expectations, Meetings & Rhythms

- Thursday Nigh Rehearsal – Weekly
- Sunday Morning Service – Weekly
- Global DT Trainings – As scheduled
- Campus Specific Events – As scheduled



## **PROCESSES, SYSTEMS, AND RESOURCES**

Communication:

**Slack:** *This app is used for all Department and Campus wide communication.*

- Rehearsal details/cancelations
- Getting availability for any Global events. (Who can serve for Flavour, 21 Days of Prayer, Night of Worship, Etc....)

**Planning Center:** We use Planning Center Online to roster our teams for any serving opportunities. This helps us streamline cue sheets, timelines, and who is scheduled to play at which campus. Your planning center account will be set up as a part of the Infuse process. Keys of songs are put in no later than Monday week of. This gives teams a proper week to prepare.

**Multitracks:** Our project manager will set you up with an account. This connects to Planning Center and produces all our practice resources for us.

## **THANK YOU**

Thank you for joining the Worship Team! If you have any questions, comments, or concerns, please feel free to reach out to your Campus Worship Leader, or Campus Pastor.