

Worship Department
Dream Team Handbook

TABLE OF CONTENTS

Welcome3

Onboarding Process4

Organizational Chart5

Our Cultural Values6

Expectations8

Communication and Resourcing9

WELCOME:

Welcome to the Worship Team! We are so excited to have you on the team. It is the honor of our life to serve God, and our church, with YOU. Together, we will point our church to Jesus and see Him glorified above everything else.

ONBOARDING PROCESS: WORSHIP TEAM

Dream Team will onboard in the following order:

- 1. Audition** – The beginning of your process is to pass an audition. Fill out the Worship Application at lifepoint.org/worship. Follow the step-by-step instructions to schedule your audition. Once this is completed, the team will reach out to you via email with all your practice resources. The practice resources and documents will show you exactly what is expected of you when you show up for your audition.
- 2. Development** – Once you pass your audition, you will start the Development process. Development is designed to help you understand Lifepoint Worship culture, what we believe, how we prepare, and what is expected of you. Essentially, we are preparing you for your first serve experience. Development will happen at the campus you desire to serve at, with the Worship Leader, and team from that location. Once you have hit all the required benchmarks [benchmarks are baseline expectations that you will need to successfully execute your position on the team], you will graduate onto the team. Development will be held weekly on Thursday nights.
- 3. Team Member** – Team members can serve on Sunday mornings, special events, and anything else requiring a worship team for Lifepoint Church. Your Worship Leader will talk to you about your availability and frequency of serving. We always like to start with twice a month, but that is not a requirement. You will be required to attend the rehearsal for the weeks that you serve.

***Growth Track:** Growth track is a requirement to serve on the Worship Team, but it is not required for you to start the Development process. Regardless of where you are in your process, work with your Worship Leader to attend at your earliest convenience.

ORGANIZATIONAL CHART

The Worship Department is comprised of Campus Worship Leaders, who come together in a collaborative way, to help create weekend worship experiences that both churched and unchurched people love to attend.

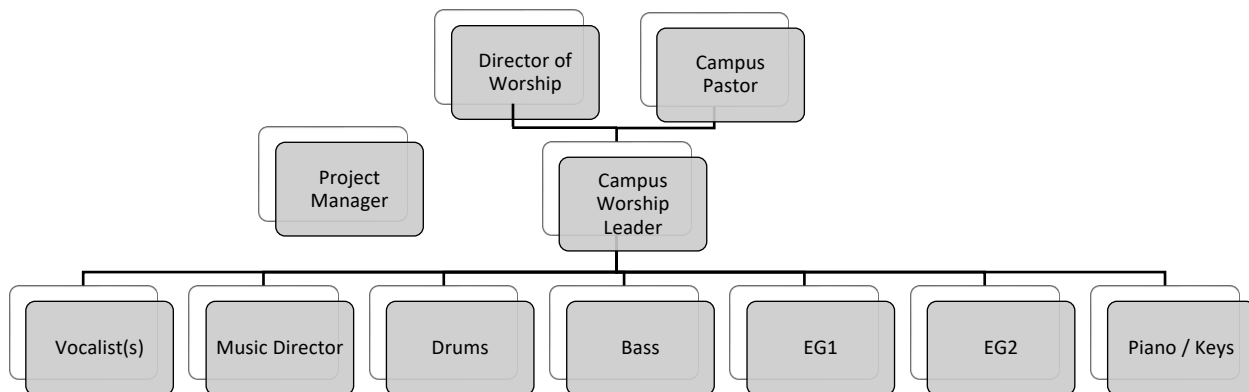
Director of Worship: Our Director of Worship is ultimately responsible for oversight of all teams listed below, as well as establishing priorities and methods for the organization at large. He or she works in collaboration with departments and campuses to create a healthy worship culture that always points people to Jesus.

Project Manager:

Our Project Manager oversees incoming requests, project timelines, cross-campus scheduling, and inter-departmental communication on behalf of the entire Worship Department.

Campus Worship Leader:

Campus Worship Leaders are responsible for the campus Worship Team. They are involved in everything! This includes, but is not limited to scheduling, communication, team health/care, and Infuse.



OUR CULTURAL VALUES

Our culture, our leadership, and our DNA is shaped by Jesus Himself. We look at how He invested His life, how He treated people, and how He approached His ministry. There is no better example for us to follow. Four values define our culture:

Love God

- Develop your closeness with God
- Develop your character
- Develop your calling

We Are Worshipers: We cannot lead anyone to a place we haven't been ourselves. Our personal worship is the foundation on which we lead. We're not building our thing; we are building His Church. When you are on a platform, it's easy to forget that what you are doing is not about you. Our goal is to always point people to Jesus first! As a Worship Team member, you hold the weight of being an example of what it looks like to have a close relationship with the Holy Spirit and showing those around you what it looks like to honor God as your closest companion.

Love People

- See people as they could be
- Say what you see in them
- Start a process to develop them

Team First: We fight for relationships and unity. Where there is unity, the Lord commands a blessing (Psalms 133). Because you are part of this team, you can help develop those around you. Each person on your team should feel known and needed. When you recognize giftings within a team member call them out, encourage them, and assist your team with taking their next steps. Everyone, including yourself, should be taking next steps to develop. We are the resource for knowing and encouraging each other to take next steps.

Pursue Excellence

- Do all things well
- Do it before you're asked
- Do more than is expected

Preparation Brings Freedom: We not only come prepared, but overprepared. The more prepared we are walking into a worship set, the more freedom we have to lead people. We go out of our way to lead through the rows to the very back of the auditorium.

We Are Always Learning: Our posture is to never "arrive". We can always get better and learn from others. As a team member, you can help set the tone and bar for where we are going as a team. Excellence is in you, because it is in the heart of our God. You are responsible for

seeking ways of development through time with Him and growth opportunities. There are many ways to do this: Lifepoint College, learning and growing deeper in the Word, and developing your faith and your knowledge. Developing and using your spiritual gifts is an integral part of being on the Worship Team.

Be Life-Giving

- Be a servant
- Be positive
- Be enjoyable

We Have a Joyful Spirit: Serving is an honor, and we have fun doing it. We are committed to having a sweet spirit. We actively engage and participate in every room that we are invited into.

We Are Relational: We do life together and work on building life-giving relationships. We seek out ways to serve others, so we can show them the character of Jesus through our actions. We ensure each environment is fun and honoring to the person experiencing it.

EXPECTATIONS

Worship Team Member – A person who has discovered their purpose and is making a difference on the Dream Team.

- Your Worship Leader will help to determine the best serving rotation for your unique role and availability. We always suggest starting with twice a month.
- Regularly communicates with his or her leader regarding prayer requests, personal development, and serving availability.

Meetings & Rhythms

- Thursday Night Rehearsals – Weekly
- Sunday Morning Services – Weekly
- Global Dream Team Trainings – As scheduled
- Campus Specific Events – As scheduled
- You will have a 1-to-1 meeting with your leader, at your availability. This meeting is about one hour and should be no less than once per month. This time allows you to communicate with your leader and develop personally and in your role.
- Your leader will reach out to check on you by phone, text, or email. Please communicate back to your leader promptly.
- You will have team meetings for development, training, or community at least once per quarter.
- You will have at least four opportunities annually to engage in training and community with other teams on your campus.
- You will have at least two opportunities annually to train with other teams globally.
- You are strongly encouraged to attend all team gatherings.

COMMUNICATION & RESOURCING

Below is a list of the programs we use and their purpose:

COMMUNICATION:

Slack: This app is used for all Department and Campus-wide communication.

- Rehearsal details/cancelations
- Getting availability for any Global events. (Who can serve for Flavour, 21 Days of Prayer, Night of Worship, Etc)
- Prayer Requests

Planning Center: We use Planning Center Online to roster our teams for any serving opportunities. This helps us streamline cue sheets, timelines, and who is scheduled to play at which campus. Your Planning Center account will be set up as a part of the Development process. Keys and song leaders will be provided by Monday of the week you are serving. This gives teams the appropriate amount of time to prepare.

RESOURCING:

Multitracks: Our project manager will set you up with an account. This connects to Planning Center and provides all our practice resources.

THANK YOU

Thank you for joining the Worship Team! If you have any questions, comments, or concerns, please feel free to reach out to your Worship Leader or Campus Pastor.